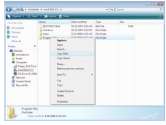


## Copy Path/Name shell extension

Written by Simeon Antonov - Last Updated Thursday, 14 July 2011 11:24

---



Copy FullPath name is shell extension which adds 'Copy Path' and 'Copy Name' to context menu on Windows explorer. When you use 'Copy Path' item, you can easily copy to clipboard full path of selected file or directory in explorer. You can copy only name of file or directory with 'Copy Name' item.

{loadposition adsense\_inline}

**Current version:** 1.0.1

### Features:

- Copy full path on selected file or directory
- Copy name of selected file or directory

### Minimum Requirements:

- Microsoft Windows - Application is tested on Windows 98, Windows 2000, Windows XP, Windows Vista, **Windows 7**
- 0.2MB free space on hard disk

[Download \( 159.53 kB \)](#)